

1/5
Repetition kap 9. Statistik (s. 242-...)

4107

$$\begin{array}{r} 720 \text{ elever} \\ 288 \text{ flickor} \\ + 432 \text{ pojkar} \\ \hline \leq 720 \end{array}$$

var 20:e

$$\begin{array}{r} 036 \\ \hline 720 \overline{) 20} \\ - 60 \\ \hline 120 \\ - 120 \\ \hline 000 \end{array}$$

a) populationen = "samling", elever = 720 st.

b) stickprov = $\frac{1}{20} \cdot 720 = \frac{720}{20} = 36$ st.

c) # flickor (obundet) = x $0 \leq x \leq 36$

d) # flickor (stratifierat) $\left\{ \begin{array}{l} f. i \% \quad \frac{288}{720} = 40\% \quad (14,4) 14f. \\ p. i \% \quad - 60\% \quad (21,6) 22p. \end{array} \right.$

Lägesmått:

$$\text{medelvärde} = \frac{9+11+8+7+12+11+11+10}{8} = 9,875$$

$$\text{median} = 10,5$$

$$\text{typvärde} = 11$$

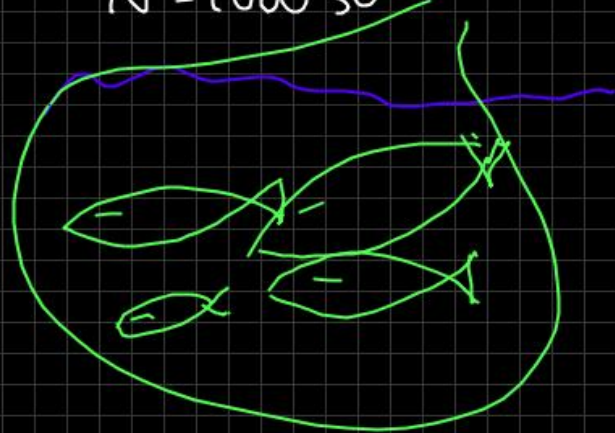
9, 11, 8, 7, 12, 11, 11, 10

Sorterat

7, 8, 9, 10, 11, 11, 11, 12

$$\frac{10+11}{2} = \frac{21}{2} = 10,5$$

4301

 $N = 1000$ st

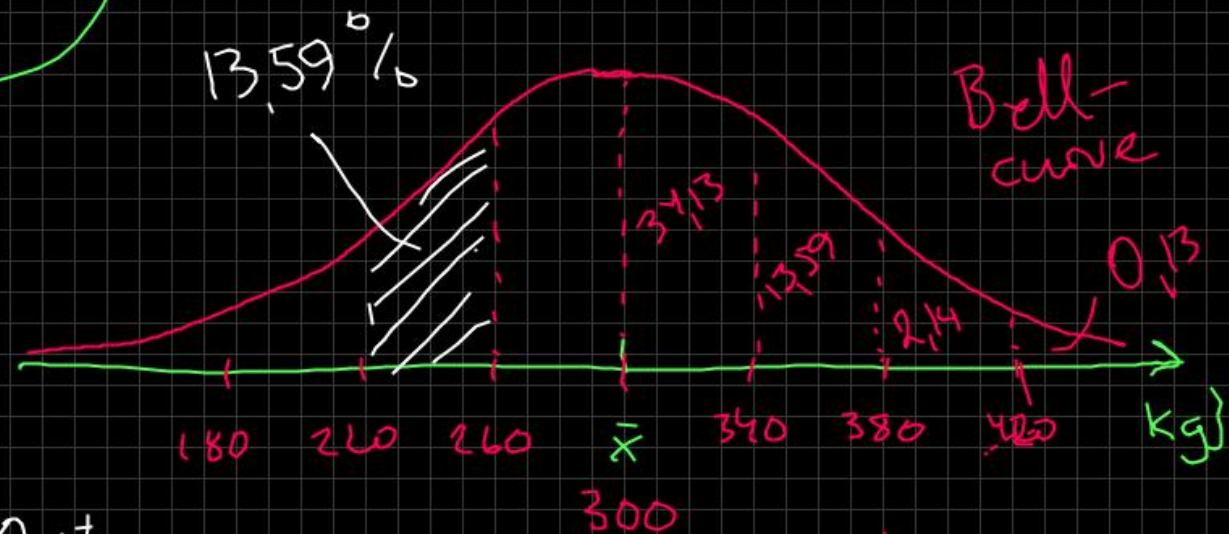
Normalfördelat

$$\bar{x} = 300 \text{ kg}$$

$$\sigma = 40 \text{ kg}$$

a) $2,14 + 0,13 \text{ \%} =$

$$= 2,27 \text{ \%}$$

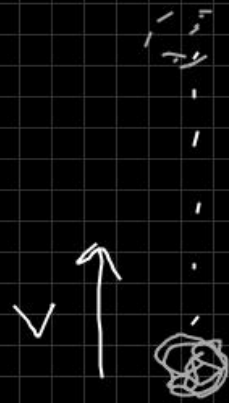


b) $13,59 \text{ \%} \approx 1000 \text{ st}$

$$0,1359 \cdot 1000 = 135,9 \text{ st}$$

Svar: $136 \text{ st} \approx 140 \text{ st}$

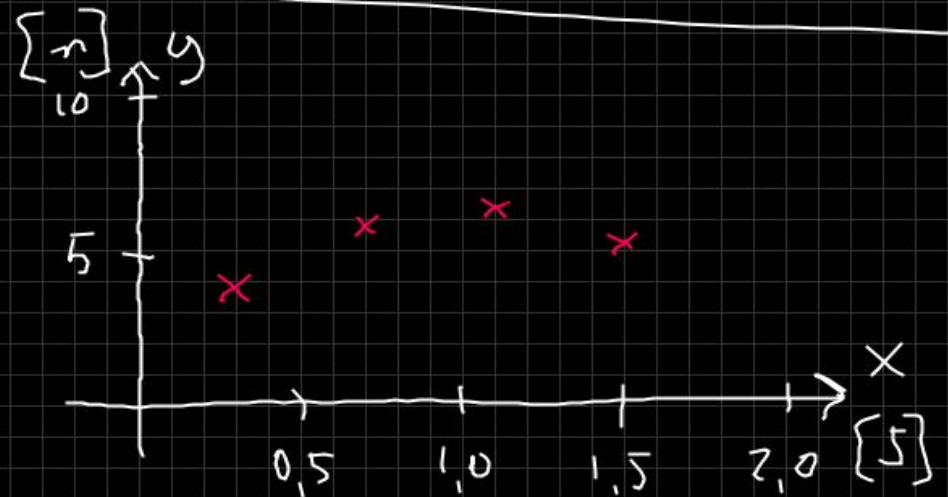
4401



- 1) Ruta bild
- 2) Faktora

3) Samband

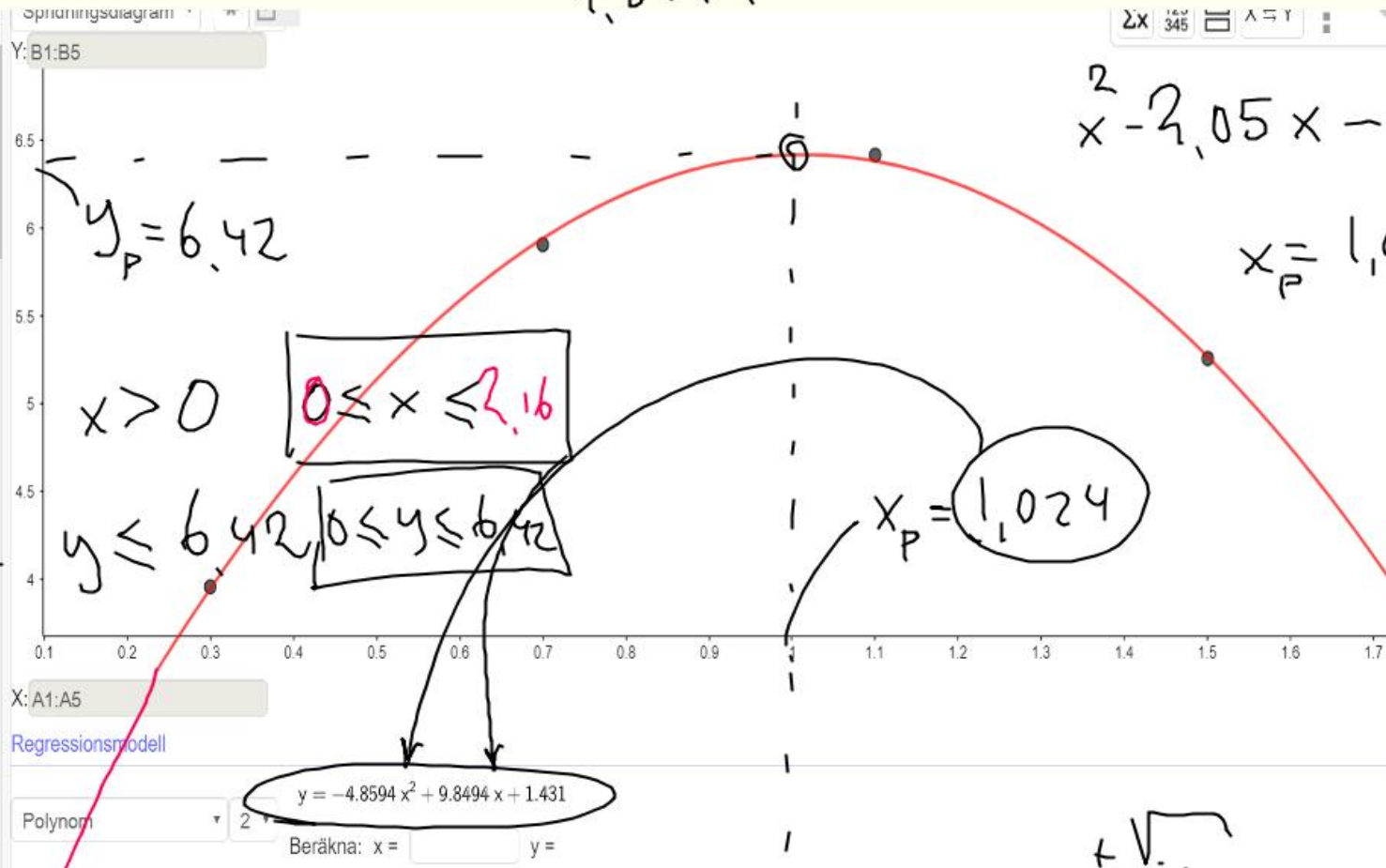
tid, xs	0,3	0,7	1,1	1,5
Höjd, y m	3,96	5,91	6,42	5,26



$$\frac{-4,8594x^2 + 9,8494x + 1,431}{-4,8594} = 0$$

x	y
0.3	3.96
0.7	5.91
1.1	6.42
1.5	5.26

Def.m
Värde m



$$x^2 - 2,05x - 0,29 = 0$$

$$x_P = 1,024 \pm \sqrt{\dots}$$

$$x_P = 1,024$$

x_1

$-\sqrt{\dots}$

$-P/2$

$+\sqrt{\dots}$

x_2